

Audio Codec Family for IP, 3G, ISDN and X21



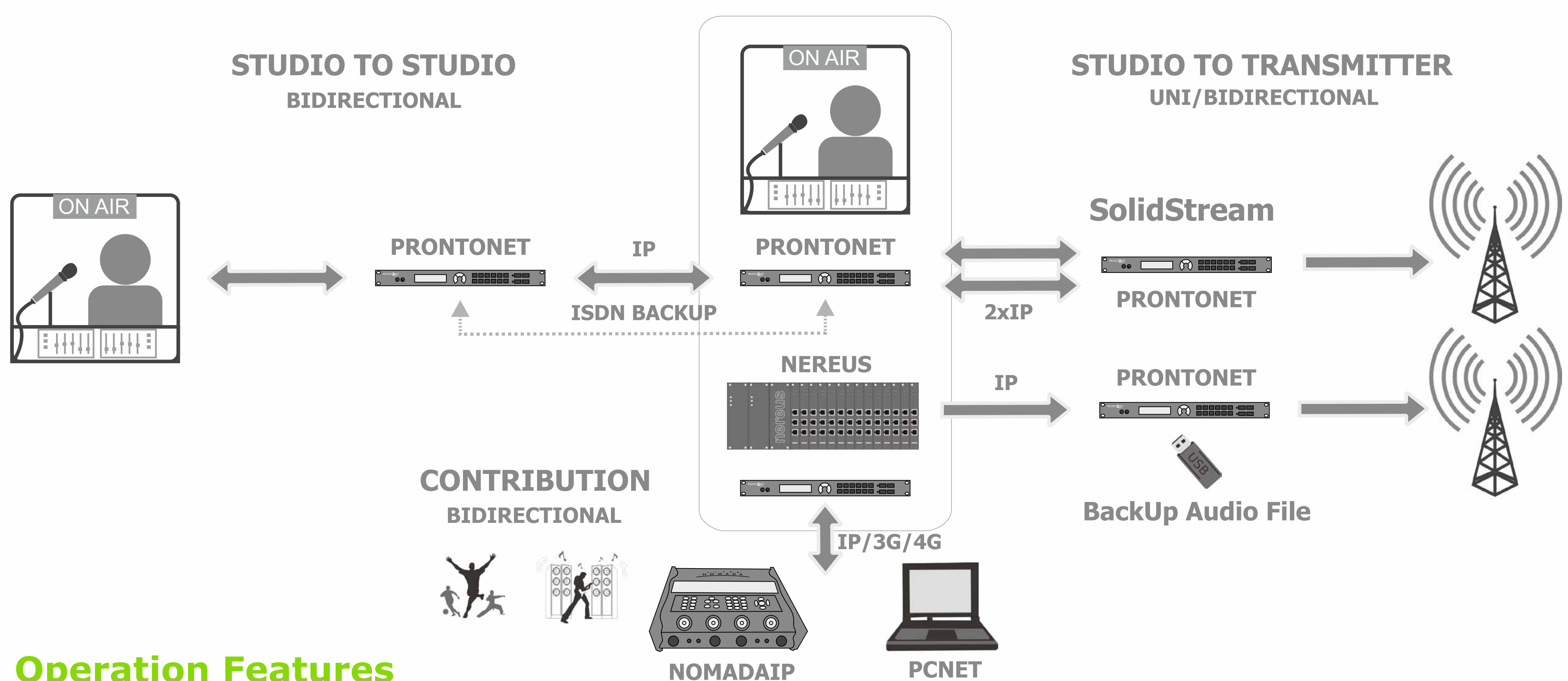
Audio Codec Family for IP, 4G, ISDN and X21.

ProntoNet is a multinetwork stereo/dual audio codec, with the widest range of compression algorithms. It is based on powerful and reliable DSP platform and fully designed in Prodys. There are two different models:

ProntoNet: offers the complete set of possibilities: bidirectional, IP/3G/X21 and all the available algorithms: OPUS, PCM, G711, G722, MPEG Layer II, apt-X™, MPEG AAC LC/LD/HE & ELD.

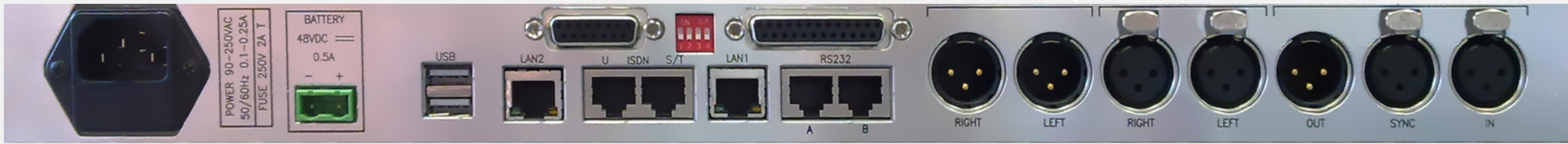
ProntoNet LC: Customizable Audio Codec, offering a subset of those features provided by ProntoNet. MPEG AAC algorithms are offered as an option.

Each ProntoNet fully support IP (TCP and UDP). This enables remote monitoring/configuring and data/audio transportation over data communication links (LAN, WAN, 3G/4G, BGAN, Internet...).



Operation Features

- ✓ **Automatic detection** of the encoding mode used by the remote unit.
- ✓ Independent encoding/decoding operation.
- ✓ **The Ethernet port** is used for audio streaming and control. The unit can be controlled remotely from its Web Page and **ProdysControlPlus**, or locally from its front panel when available.
- ✓ **SolidStream by Prodys** enables streaming of STL-grade audio quality over inexpensive IP links.
- ✓ **Additional LAN Management port** to split audio and control data flows, or for SolidStream.
- ✓ Call facilities: **Auto-redial**, call **scheduler** and **log systems**.
- ✓ **User Access Control** to define different access restrictions in a per user basis.
- ✓ **Configuration presets** to define different configurations for all or some specific parameters.
- ✓ **N+k Prodys Redundancy Protocol** allows K backup IP codecs to provide resiliency for up to N active IP codecs.
- ✓ Up to seven user **configurable general purpose input-outputs** (GPIO). Inputs can be set up to control audio inputs or reset alarms, and outputs can be configured to monitor different points.
- ✓ **BackUp Audio File:** Fail-over solution that switches audio output to playlist from a USB stick.
- ✓ **Alarms:** Real Time alarms management through **SNMP traps**, **GPO** and **e-mails**.
- ✓ AC power supply with an **option for a DC redundant power supply**.



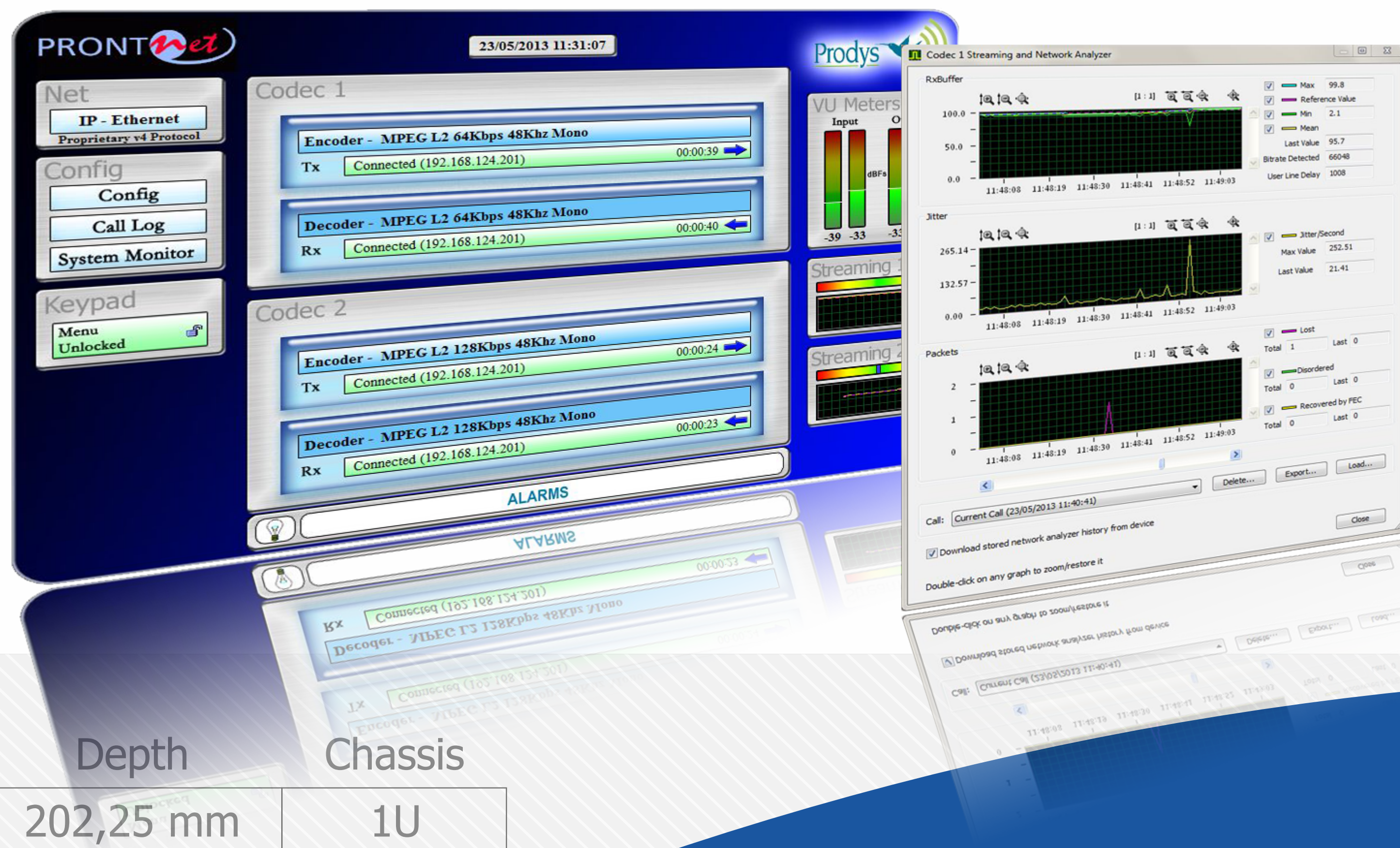
Prontonet rear view

Audio Features

- ✓ Analog and Digital Stereo Audio in a single unit
- ✓ **Analog Audio**
 - 24 bits A/D and D/A converters.
 - XLR connectors electronically balanced
- ✓ **Digital Audio**
 - AES/EBU. Up to 24 bits. Automatic rate adaptation.
 - Transparent mode over IP to send data instead of audio, such as Dolby E
 - XLR connectors
 - External clock input.
- ✓ **Audio Compression Algorithms**
 - OPUS
 - G722, G711 A/μ Law
 - MPEG 1,2 Layer II
 - Enhanced and Standard apt-X™
 - MPEG AAC LC, LD, HE & ELD (*) Optional for LC
 - PCM (16,20 & 24 bits)

Communications Features: IP, 3G, ISDN and X.21

- ✓ **Dual operation over IP and ISDN:** Program and Talkback lines.
 - ✓ **IP**
 - 10/100BaseTx Ethernet port, RJ45 connector.
 - Fully **TCP/UDP/IP** connectivity.
 - **IP Multicast, Unicast and Multi-Unicast** audio streaming transmission/reception.
 - **IP Compatibility:** SIP/SAP/SDP/RTP/STUN according to N/ACIP EBU Tech 3326.
 - Prodys **NAT Traversal** Streaming Protocol permits router firewall pass-through.
 - **FEC** (Forward Error Correction) and **Error Concealment** to recover from packet losses.
 - **SolidStream by Prodys** allows streaming of STL-grade audio quality over inexpensive links.
 - Prodys **Real time Network Analyzer** to monitor critical network parameters in real time.
 - **Automatic Jitter buffer** to avoid audio dropouts, compensating for up to 10 seconds.
 - ✓ **3G/4G** (optional): Streaming over 3G/3.5G/4G networks via USB modem.
 - ✓ **ISDN** (optional):
 - **Terminal adaptor** available with S/T and U interfaces. RJ45 connector.
 - **ISDN Compatibility:** Fully compatible with all major manufacturers, supporting the most important bonding algorithms: J52, Telos and CCS bonding.
 - **BackUp** System: ISDN as a secondary link for IP/X21.
 - ✓ **X21: Interface** available for synchronous digital dedicated lines up to 576kbps.
 - ✓ **Auxiliary data:** Auxiliary data on RS232 or RS442 ports from 300 to 115200 bps.
 - ✓ **GPIO:** 7 inputs/outputs. User configurable. Remote contact closures.
 - ✓ **BackUp Audio File:** Fail-over solution that switches audio output to playlist from a USB stick.
 - ✓ **Local or remotely (TCP/IP) upgrading** of one or several units at once using the same utility.
- Factory software upgrades can be downloaded free.



Width	Height	Depth	Chassis
19"	43.4 mm	202,25 mm	1U