

30/06/2020

## Introducing ProdysControlPlus Manager

ProdysControlPlus is a Windows OS application for centralizing the management of any Prodys audio and video codec. The codecs liable to be controlled with ProdysControlPlus are Quantum and Ikusnet types.

### **Key Features:**

- Full access to remote codec on the network, even those behind NAT routers and 3G/4G networks. Support of dynamic addresses for remote codecs is provided.
- Remote Streaming on/off control, mic gain level, mixer control, streaming profile selection.
- Camera preview for video enabled products. (please check Ikusmatrix section)
- Real-time information from every remote codec as on- /off- line status, alarm indication, remote party IDs, streaming status, audio encoder Vu-meters, firmware version, etc.
- A global alarm monitor collects and highlights alarm indications of any on-line codec. Filtering by codec name, SIP URI, type of codecs and alarm information is possible.
- Shared and central Call Directory (BOOK) is provided and available for any codec within this administration.



- Customizable user interface offering only the relevant information for any purpose.
- Versions up to 250 codecs are licensed.
- Client /server application.

### Network Views:

General listed view of the codecs under control and Global alarm monitor on the bottom part of the screen.

Streaming and other status are highlighted by colors: [red] alarmed, [grey] off-line, [green] streaming, [white] idle or available.

The screenshot displays the 'ProdysControlPlusClient - Admin - States' window. The top menu bar includes options like Logout, Configuration, Device Catalog, Manage Users, Manage Phone Book, Show Call History, Configure Alarms, Show Alarms Log, Show Alarms Log, Show Alarms Log, and Edition Mode. The main area is divided into two sections: a tree view on the left and a table on the right.

**Tree View (Left):**

- Devices
  - CUSTOMERS
    - team Madrid2
    - Team NY1
    - Team sport3
  - LITE Reporters
    - QLite Boston
  - PRODYS
    - Studio WH
  - BP
  - DEC (Global Tb)
  - RadioQ

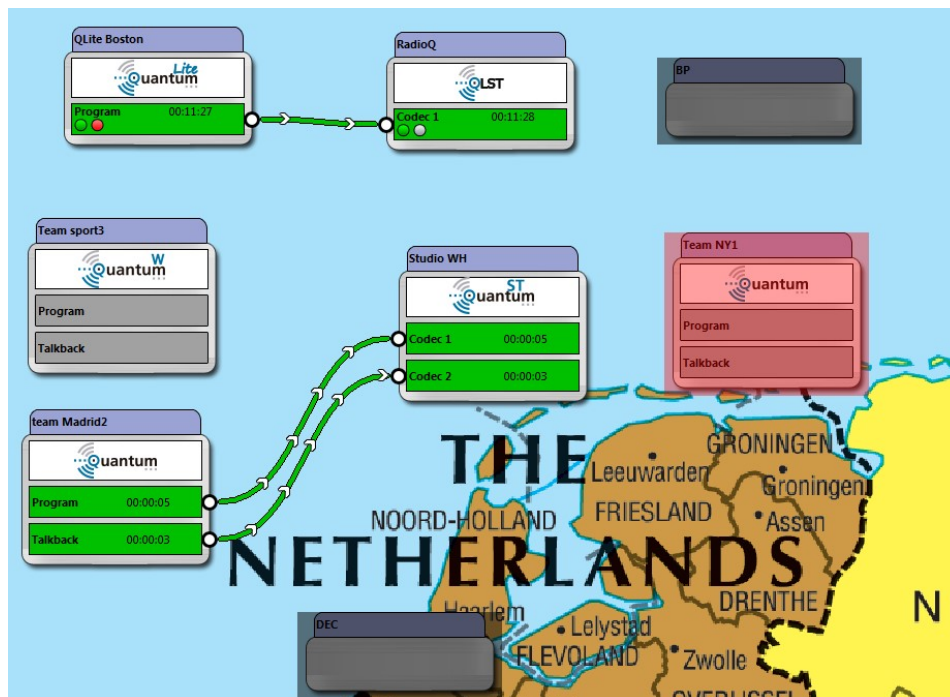
**Main Table (Right):**

Folder	Type	Name	Line 1 Status	Encoder Video I
\Devices\CUSTOMERS	Quantum	team Madrid2	Idle	
\Devices\CUSTOMERS	Quantum	Team NY1	Idle	
\Devices\CUSTOMERS	Quantum W3	Team sport3	Idle	
\Devices\LITE Reporters	Quantum Lite	QLite Boston	Connected to RadioQ (Codec: 1)	
\Devices\PRODYS	Quantum ST+	Studio WH	Idle	
\Devices		BP		
\Devices		DEC		
\Devices	Quantum Lite ST	RadioQ	Connected to QLite Boston	

**IkusNet Alarms (Bottom):**

Alarm Type	Start Time
Backup	
Audio	
Video	
Battery	
Files	
Connection	26/07/2018 14:03:49
Monitor	
System	

General icon view. Each codec is presented by its own icon. The colors of the icon indicates the current status as described: idle, streaming, alarmed, off-line, etc.



The icons can be grouped in folders (functional, regional or any other administrative grouping).

Administrative information is provided for any element:

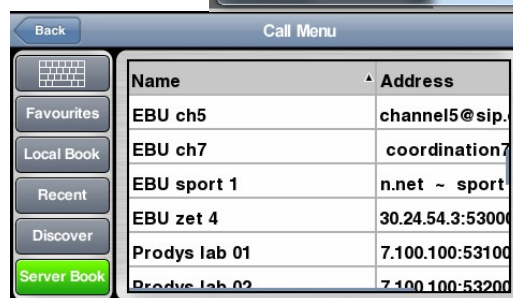
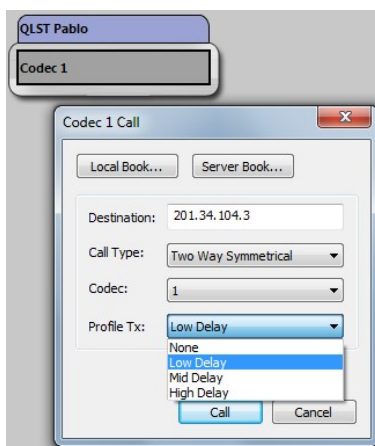
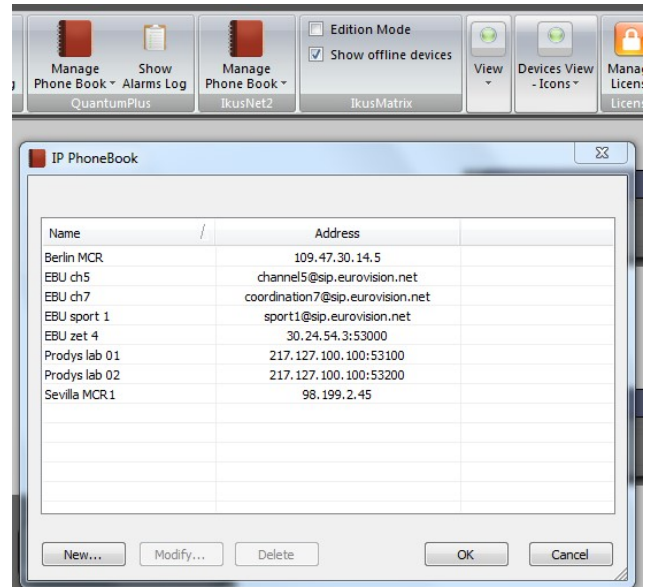
Enabled	Name	Serial Number	IP	State	Device Type	Version	%	/	..	..	Call To
<input type="checkbox"/>	Sopote Prontonet	10095/000349		Waiting Connection...							Public IP/Port 1
<input type="checkbox"/>	RadioGaga	12416/000193		Waiting Connection...							Public IP/Port 1
<input checked="" type="checkbox"/>	team Madrid2	81285/010120	10.10.4.1	Ready	Quantum	3.5.5d					Public IP/Port 1
<input checked="" type="checkbox"/>	Team NY1	81285/020276	10.10.11.92	Ready	Quantum	3.5.5d					Public IP/Port 1
<input checked="" type="checkbox"/>	Team sport3	81887/020191	10.10.13.124	Ready	Quantum W3	h2.2.6					Public IP/Port 1
<input checked="" type="checkbox"/>	Lite Austria	81892/020147		Waiting Connection...							Public IP/Port 1
<input checked="" type="checkbox"/>	QLite Boston	81892/020151	176.82.252.147	Ready	Quantum Lite	h2.2.6					Public IP/Port 1
<input checked="" type="checkbox"/>	Camerun	81892/040850		Waiting Connection...							Public IP/Port 1
<input checked="" type="checkbox"/>	Studio WH	81893/010226	10.10.4.0	Ready	Quantum ST+	h2.2.6					Public IP/Port 1
<input checked="" type="checkbox"/>	RadioQ	82006/000113	79.154.153.123	Ready	Quantum Lite ST	c2.2.6					Public IP/Port 1
<input checked="" type="checkbox"/>	QLST Austria	82006/000344		Waiting Connection...							Public IP/Port 1
<input checked="" type="checkbox"/>	Quantum Madrid	82317/000102		Waiting Connection...							Public IP/Port 1
<input type="checkbox"/>	DEC	82435/000101		Waiting Connection...							Public IP/Port 1
<input type="checkbox"/>	BP	82624/010103		Waiting Connection...							Public IP/Port 1

Buttons: Add... Modify... Remove

## Common Call Directory (BOOK)

A shared Call Directory is provided for IP, SIP, ISDN and other applications.

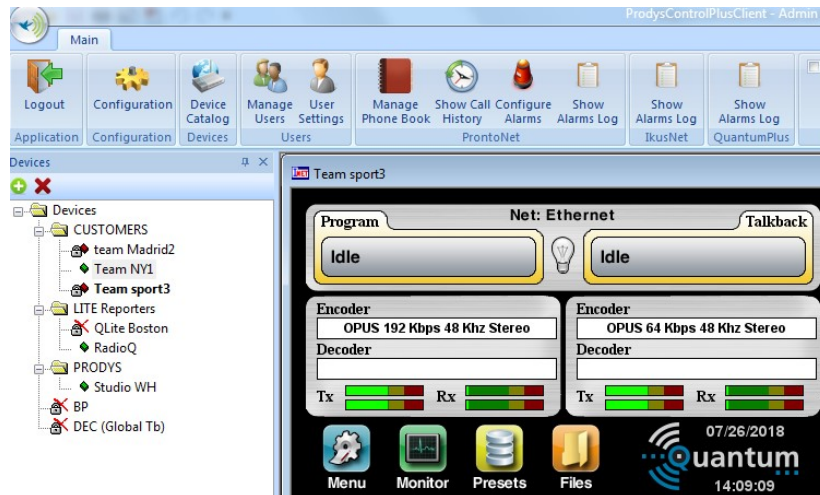
The Call Directory (BOOK) is shared with any codec subscribed to this administration.



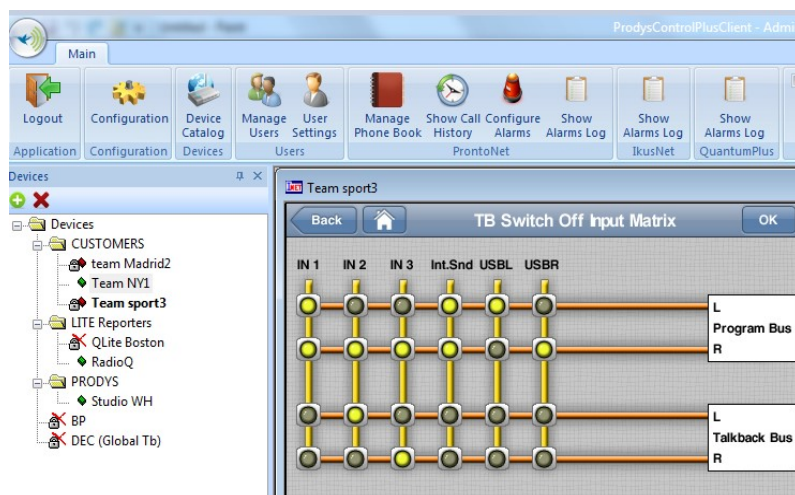
Selection of the streaming profile for the next audio or video connection.

## Element Views:

Access to the remote field codecs as if seating in front of the codec:



Encoder Mixer control of the field codecs:

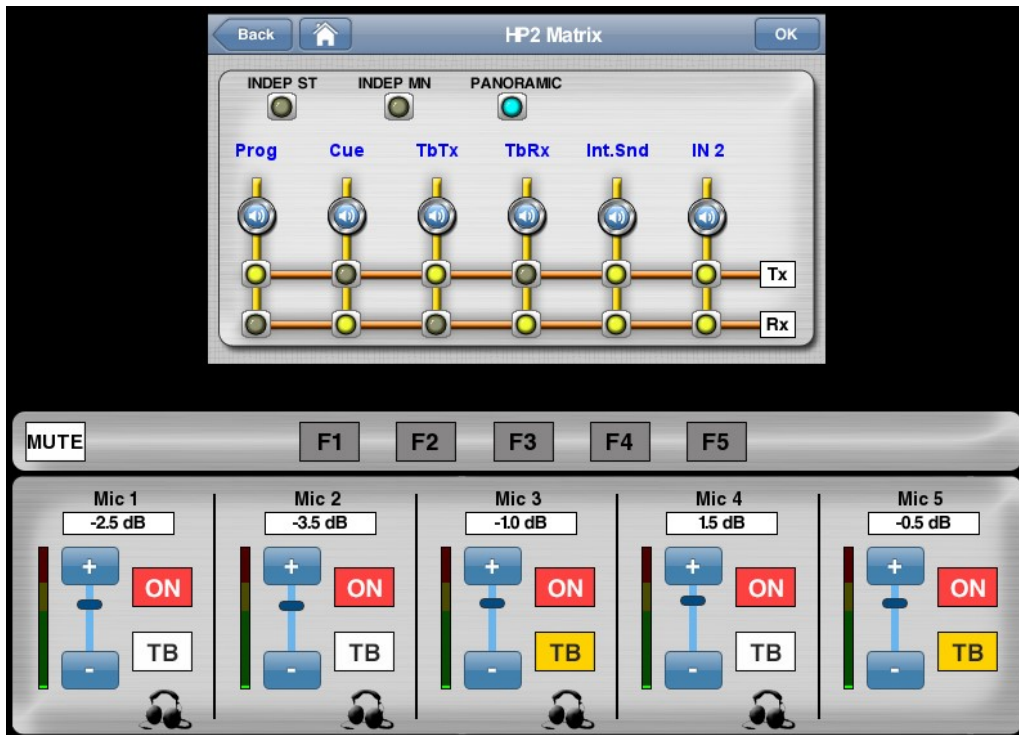


Remote input audio gain control; hand-free operation for talents:

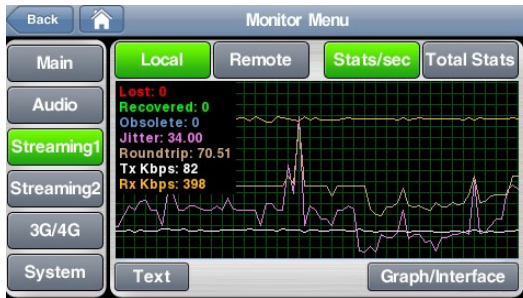


- Remote Overall or individual Mute
- Remote Program and Talkback switching
- Remote Input gain control and input Vu-meter display

Independent Headphone mixer & balance control for each talent using short keys. (On the picture example for headphone-2)







Streaming performance monitor:

Streaming Graphic analyzer over 24h for lost packets, round-trip time, streaming bandwidth, network jitter, recovered or obsolete audio data.

The interface shows the 'Monitor Menu' with 'Streaming1' selected. The main area displays a 'Local' tab with a 'Stats/sec' view. It features a table with columns: Global, Lan1 (1), and Lan1 (2). The table contains data for Lost, Recovered, Obsolete, Jitter, Roundtrip, Tx Kbps, and Rx Kbps. At the bottom, there is a 'Graph' button and a 'Last Update: 15:42:36' timestamp.

	Global	Lan1 (1)	Lan1 (2)
Lost	0	0	0
Recovered	0		
Obsolete	0	0	0
Jitter	15.94	15.94	0.0
Roundtrip	56.68	56.68	0.0
Tx Kbps	78	78	0
Rx Kbps	399	399	0

Streaming Statistical analyzer for any network performance data.

Accumulated data over the connection time or refreshed every few seconds.

Statistical data from near and far end.

The interface shows the 'Monitor Menu' with '3G/4G' selected. The main area displays a table with columns: #, Network, Signal, Status, and Tech. The table contains data for two networks: Movistar and SIM Not Inserted.

#	Network	Signal	Status	Tech
1	Movistar	100 %	Connected	LTE
2			SIM Not Inserted	

LTE network performance data for the full range of modems in use.



IkusMatrix view enhances the administration experience for video enabled products (Ikusnet product family).

Bidirectional talkback audio connection between the field units and the local decoders can be commanded fluently from this position. Any video or audio connection can be initiated, stopped or adjusted from this position; the field team are not required to access their controls while handling their cameras.



